



Lori Anne Giese, of Brownsville, TX

August 29, 1959 - January 30, 2026

Lori Anne Giese, 66, of Brownsville TX, passed away after an unexpected illness at UMass Memorial Hospital in Leominster, MA on January 30, 2026. She was in the Boston area celebrating the holidays with her partner Claude and his family.

Lori was born on August 29, 1959 to Maxine A (Bury) (Giese) Carlson and Loren H Giese in Stevens Point, Wisconsin. She grew up in the Plainfield, WI area, graduating from Tri-County High School in 1977. She graduated from Viterbo College in LaCrosse, WI with a Bachelor of Science Nursing degree, and later from the University of Florida with a Nurse Practitioner degree. Lori wanted to be a nurse from the time she was a little girl so that she could “take care of Grandpa Giese”. She worked at numerous health care facilities during her RN and NP career.

In 1986 she moved to FL where she would ultimately start her family and was ecstatic to become a mother to Emily Anne. She returned to Central Wisconsin in 2014, and after seven winters there moved to Winter Haven Resort retirement community in Brownsville, TX, where she resided until her passing. There, she met Claude Vernatter and they have enjoyed many great adventures together.

Lori was happiest when she was outside in nature, she cherished the feel of

the sunshine on her face, the breeze in her hair and the water on her skin. She loved swimming, hiking, biking, camping, kayaking, contra and line dancing, knitting, painting (no item was off-limits to paint on), butterflies, and making art projects out of nature items (especially grape vines). During retirement Lori found true happiness, peace and contentment in her life. Lori made close and lasting friendships everywhere she lived, she genuinely cared about everyone. Lori was an outgoing spunky individual who will be greatly missed by so many people.

Lori is survived by her daughter, Emily Anne Giese Hoatson and their partner Alan Price, Richmond, VA; sisters Janel (Gary) Kollock, Plover, WI, and Britt Rain, Hancock, WI; a nephew and nieces; and very many close friends. Lori also leaves behind her loving and devoted partner, Claude Vernatter.

She was preceded in death by her parents and an infant sister Marion Susan.

We will plan celebrations of her life in the future. Fly high with the butterflies
Lori!

Tribute Wall

IH

“ I will always remember watching Lori dance with her girlfriends at winterhaven Saturday night dances. Having so much fun . And then along came Claude , her muse and seeing them fall in love. My Sympathies to Claude and Lori's family in the loss of your beautiful free spirit.

Irene Souque Hewitt - February 15 at 08:28 AM

PH

“ we are heartsick over Lori's death. She was a special part of our Winterhaven community and we will miss her kindness and ready smile.
Our condolences to the family and to Claude.

Peggy and Phil Hardin - February 05 at 11:12 AM

JC

“ Lori was a caring person who always stopped to say hi and ask how my husband Bill and I were doing. She genuinely cared about us and everyone around her. Our sincere condolences to you Claude and family, she will be missed.

Julie Cotton - February 05 at 10:16 AM

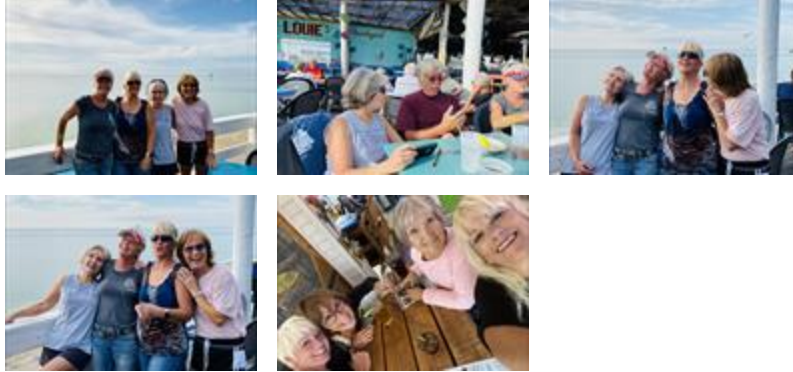
ML

“ Loved Lori from the first time we met her! Always a smile, hug and kind words. Sincere sympathy to her family.

Michele & Allen Laduron - February 04 at 05:40 AM

RS

“ I too had the pleasure of being a friend of Lori and will miss her I found a few photos of her you may enjoy. Days of fun and gardening out dancing and playing. Tiny Lori being fierce and strong. Love you Lori



Ruth Scott - February 04 at 02:07 AM

MC

“ I feel blessed to have met Lori while in Texas and will carry fond memories of her beautiful soul. Maureen Cook



Maureen Cook - February 03 at 11:04 PM

TI

“ Theresa Iverson lit a candle in memory of Lori Anne Giese, of Brownsville, TX



Theresa Iverson - February 03 at 08:53 PM

EH

“ *I really miss you, I wish we could've had one more cuddle* ❤️



EmilyAnn Hoatson - February 03 at 07:44 PM



“ *So very sorry for this incredible loss. Sending my condolences to Claude and family.*

Billy McCaughey - February 03 at 07:30 PM